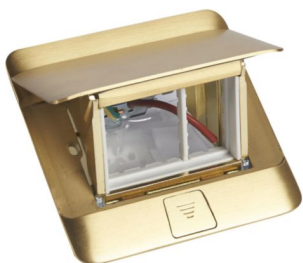


Product sheet



LEGRAND

Pop up 3 modules to be equipped - brushed brass finish

REF. 054015 | EAN. 3245060540159

[> Visit e-catalogue](#)

Product characteristics

- Retractable unit with 1 compartment
- To be installed into the concrete floor or the raised floor
- Ultra - slim design
- Brushed Brass finish
- Unit to be equipped

Recommendation / Restriction

- Data sockets can only be used in raised access floors together with the installation kit

The product's benefits

Installation

- An easy and quick installation with the installation kit or the backbox

Usage

- A "Push and Slide" opening system to avoid unintentional opening of the product.

Documentation

TECHNICAL DOCUMENTATION

- F01367FR-05.pdf | PDF (1.28Mo)
- LE04004AA-03.pdf | PDF (3.44Mo)
- F01367EN-05.pdf | PDF (1.5Mo)

Agreements & Certificates

- LGRP-01527-V01.01-EN.pdf | PDF (0.58Mo)

CATALOGUE PAGE & OTHERS

- ex223001_1168.pdf | PDF (0.1Mo)
- ex223001_1169.pdf | PDF (0.05Mo)