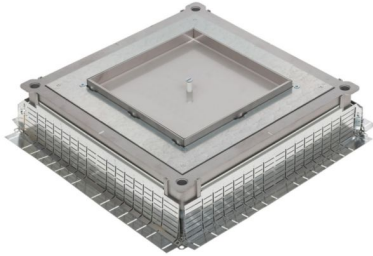


Product sheet



MOSAIC™ LEGRAND

Plain plate for cable derivation for heavy load floor box up to 10KN

REF. 089685 | EAN. 3245060896850

[> Visit e-catalogue](#)

Product characteristics

- Allow the distribution of strong or low currents in concrete floor
- Thickness coating (tile, marble) between 6 and 28mm
- IP66 with closed cover

Recommendation / Restriction

- For installation in concrete floor only - Coating between 6 and 28mm + slab thickness superior 105mm - Temperature of use, transport and storage: -5° à +60°

Documentation

TECHNICAL DOCUMENTATION

→ [LE01716AB-05.pdf](#) | PDF (3.32Mo)

 [F00838FR-06.pdf](#) | PDF (1.08Mo)

 [F00838EN-06.pdf](#) | PDF (1.05Mo)

CAD & Design specs / BIM

[Legrand-heavy-duty-floor-boxes-EN.rfa](#) | RFA (1Mo)

[Legrand-boites-de-sol-charge-lourde-FR.rfa](#) | RFA (1Mo)

The product's benefits

Installation

- Useful for heavy duty and water resistant floor boxes

CATALOGUE PAGE & OTHERS

 [ex223001_1164.pdf](#) | PDF (0.11Mo)