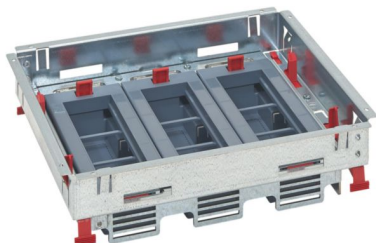


# Product sheet



## LEGRAND

Horizontal adjustable supports kit for standard floor box, capacity 18 modules (three baskets 6 modules)

REF. 088021 | EAN. 3414970755124

[> Visit e-catalogue](#)

## Product characteristics

- Baskets' height adjustable from 80mm to 110mm (from the top of the supports kit)
- Baskets compatible with the wiring devices Legrand Mosaic and Arteor. Basket fast installation by locking without tool
- Kit's frame in galvanised steel for protection against the corrosion.
- pre-cut cables outputs to facilitate their installation.
- Baskets supports meet the IEC/EN 60670-23 standard. Moreover, with the lid of floor box closed, they offer a degree of protection IP24 (no risk of digital contact on the electrical connections, and protection against water projections)

## Recommendation / Restriction

- Indoor use only.

## The product's benefits

### Installation

- Floor box modular to compose : matchs with your needs (type of installation, number of modules, finishes), gives time for reflexion, protects the product during the progression of the work site (the installation follows the steps of the site).

### Usage

- Adapts to the surrounding environment thanks to the choice possibilities of the standard lid to associate with it : plastic or Stainless steel or Brass finish.

### Avantages

- A universal range available in three sizes, adapted to any kind of floor (raised floors, screed floors) and upgradable because equipped with commons wiring devices supports (a standard floor box can become a flush one without touching the electrical connexions).
- Fast installation without tool : the frame of supports kit clips in any kind of floor (directly in the raised floor or through one of the two backboxes in the screed floor).

## Documentation

### TECHNICAL DOCUMENTATION

→ [LE07870AA-06.pdf](#) | PDF (3.36Mo)

[F03331FR-03.pdf](#) | PDF (4.42Mo)

### CATALOGUE PAGE & OTHERS

[ex223001\\_1143.pdf](#) | PDF (0.46Mo)

[ex223001\\_1140.pdf](#) | PDF (0.12Mo)

 F03331EN-03.pdf | PDF (4.4Mo)

 F03334EN-03.pdf | PDF (6.96Mo)

 F03334FR-03.pdf | PDF (7.11Mo)

## CAD & Design specs / BIM

Legrand\_universal\_round\_floor\_boxes\_EN.rfa | RFA (1.09Mo)

Legrand\_boites\_de\_sol\_univ\_affleurant\_FR.rfa | RFA (1.45Mo)

legrand\_boites\_de\_sol\_univ\_vers\_rde\_FR.rfa | RFA (1.09Mo)

Legrand\_universal\_std\_floor\_boxes\_NL.rfa | RFA (1.49Mo)

Legrand\_universal\_std\_floor\_boxes\_EN.rfa | RFA (1.46Mo)

Legrand\_universal\_flush\_floor\_boxes\_NL.rfa | RFA (1.45Mo)

Legrand\_universal\_flush\_floor\_boxes\_EN.rfa | RFA (1.45Mo)

Legrand\_universal\_round\_floor\_boxes\_NL.rfa | RFA (1.09Mo)

legrand\_boites\_de\_sol\_univ\_vers\_std\_FR.rfa | RFA (1.46Mo)

 3D\_LG-088021.stp | IFC (19.15Mo)

 ex223001\_1144.pdf | PDF (0.05Mo)

 ex223001\_1142.pdf | PDF (0.51Mo)

## Agreements & Certificates

 LGRP-00109-V01.01-EN.pdf | PDF (0.61Mo)

 LGRP-00108-V01.01-EN.pdf | PDF (0.61Mo)