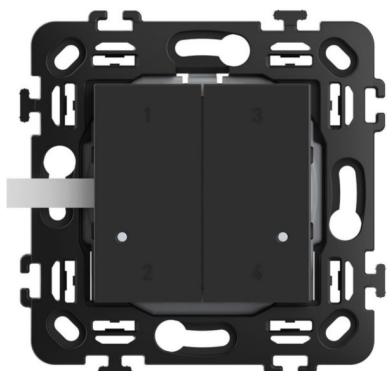


Product sheet



CLASSIA BTICINO

Classia with Netatmo 4 scenario wireless to launch your scenarios

REF. BT-RG4575CW | EAN. 8005543674048

[> Visit e-catalogue](#)

Product characteristics

- LED with low battery indicator
- Supplied with a replaceable battery with an 8-year life
- 2.4GHz radio technology, using Zigbee 3.0 reliable and secure
- Black

Recommendation / Restriction

- To add your 4 scenarios wireless control to your connected installation, it is necessary to purchase and install a ARTEOR with Netatmo connected starter pack beforehand.

The product's benefits

Installation

- Extra flat, the 4 scenarios wireless control is fixed to a wall with the adhesives supplied. It is therefore repositionable. It can also be screwed onto a flush mounting box

Usage

- Choose in the Home + Control App the lights, roller shutters and electrical devices that you want to control via scenarios 1, 2, 3 or 4 and rename them!

Avantages

- Perfect aesthetic integration with the installed wiring devices

Documentation

TECHNICAL DOCUMENTATION

→ [LE12166AA.pdf](#) | PDF (1.28Mo)

📄 [IDP000364_01-EN.pdf](#) | PDF (1.82Mo)